

ncfe.



English and Maths

Your curriculum planning tool **2019-20**

February edition

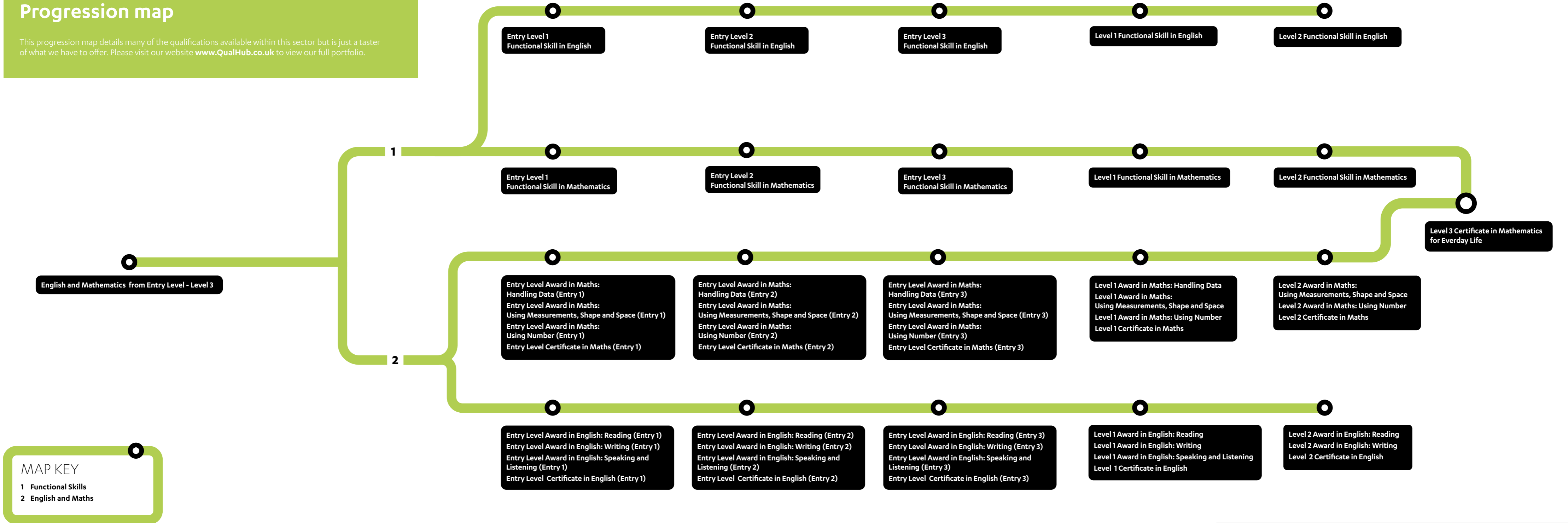
**Open up our progression map
to plot your learner journeys and
plan your curriculum.**



English and Maths

Progression map

This progression map details many of the qualifications available within this sector but is just a taster of what we have to offer. Please visit our website www.QualHub.co.uk to view our full portfolio.



For details on the many qualifications that will support learners' general progression, please see our Supporting Qualifications document which provides information on all of the qualifications found below. All qualifications in this map are eligible for funding. Please check the [ESFA Hub](#) and relevant Funding Rules or Guidance for confirmation on which funding streams they're eligible under plus the learner eligibility criteria.

Your curriculum planning tool

Whether you're based in a college, training provider or school, this document has been designed to help you plan which qualifications you'd like to deliver.

These qualifications may complement the delivery of our core products in other sector areas.

Remember to visit **www.QualHub.co.uk** to view our full portfolio of qualifications across all sectors.

QualHub is our site for customers to browse and search for qualifications across both **NCFE** and **CACHE** brands, submit qualifications for approval and also access all of our delivery support materials.

Using this product guide

Qualifications are grouped into subject areas which makes the document easy to navigate.

A **Level 1 Certificate in English**

D Minimum Entry Age: 14 **LRA** **ncfe.** **C**

FACTS AND FIGURES	
Qualification no/Learning Aim Reference:	601/1530/0 B
Guided Learning Hours (GLH):	130
Total Qualification Time (TQT):	130
Credit Value:	13 F

G Learning Resources Available from: NCFE / Learning Curve Group

KEY

LRA Learning Resources Available

Understanding the qualification pages

- A** This is the qualification title.
- B** This is the Qualification Reference Number (QRN).
- C** If the qualification is NCFE or CACHE, the relevant logo will appear here.
- D** This is the recommended entry age for the qualification.
- E** The icons in this area are intended to give you more information about each of the qualifications. This includes performance points, UCAS points, learning resources and more. Please see the key on the left to find out what each icon means.
- F** The credit value (if applicable) for the qualification will appear here.
- G** All qualifications are supported by a Qualification Specification. However, in many cases, there are additional materials available including sample portfolios and learning and delivery resources from NCFE, CACHE and third parties. If these additional support materials are available for the qualification, we will list who they are supplied by here.

Please note, all qualifications in this guide are eligible for funding. Please check the ESFA Hub and relevant Funding Rules or Guidance for confirmation on which funding streams they're eligible under plus the learner eligibility criteria.

Working together

The best teams work together as a unit to achieve outstanding results. That's why we work with a network of established third parties to provide a wide range of materials to support our qualifications. Here you'll find further information about each third party and how they can help you.



Website:

www.learningcurvegroup.co.uk

Email:

salesteam@learningcurvegroup.co.uk

Phone:

01388 777 129

Learning Curve Group – NCFE's premier partner

Learning Curve Group (LCG) supports over 200 NCFE and CACHE centres with strategies that increase adult learning engagement. Their services include:

- NCFE and CACHE approved learning and assessment content, available both online and in paper formats, for AEB, apprenticeships and loan funded provision.
- an innovative online learning and assessment platform that provides a quick and efficient tracking mechanism, enabling providers to monitor learner progression.
- consultancy services led by respected FE specialist Beej Kaczmarczyk.
- recruitment of applicants for PAYE and self-employed vacancies.
- support with links to levy paying employers.

LCG aims to maximise your offer around loans, levy and localism, whilst also enabling best practice that keeps learners safe.



Website:

www.hallmarkeducation.org.uk

Email:

info@hallmarkeducation.org.uk

Phone:

01332 410 067

Hallmark Education

Hallmark Education publishes high-quality learning resources to support the cost-effective delivery of a wide range of NCFE qualifications.

The team at Hallmark has been helping NCFE centres for over 10 years.

With a wealth of experience in educational publishing, learner recruitment, tutor training and audit compliance, Hallmark can offer services including:

- high-quality learning resources
- tutor support
- consultancy
- employer engagement and learner find.



Website:

www.hoddereducation.co.uk

Email:

educationenquiries@hodder.co.uk

Phone:

01235 827 720

Hodder Education

Hodder Education, winner of the Bookseller Industry Awards for 'Educational, Academic and Professional Publisher of the Year' 2015 and 2016, publishes a wide range of market-focused innovative print resources and digital services, designed for core UK and key international markets.

Hodder Education is one of the largest school publishers in the UK, trusted to help teachers teach and students learn through its wide range of high-quality resources and training events. Hodder Education supports the curriculum in almost every subject area and at every level, selling to over 140 countries worldwide.



Website:

www.lasersys.co.uk

Email:

info@lasersys.co.uk

Phone:

01753 584 112

Laser Systems

Laser Systems team members are education professionals with a wealth of knowledge and experience in quality and assessment, and have created an e-portfolio which is intuitive for both assessing teams and learners.

As well as an industry-leading e-portfolio, Laser Systems also provides high-quality online learning resources for full qualifications and CPD short courses. Learning resources combine filmed tutorials with a professional presenter, video good practice examples, reading, extended learning, and an interactive quiz. For full qualifications, available learning resources cover knowledge for each learning outcome. Laser Systems prides itself on its customer service, providing support and guidance for Laser users from day one, and takes part in events and standardisation days alongside NCFE and CACHE.



Website:

www.theskillsnetwork.com

Email:

enquiries@theskillsnetwork.com

Phone:

01757 210 022

The Skills Network

The Skills Network is one of the UK's most successful providers of technology-enabled training and skills solutions.

They support educators, employers and learners across the UK, and internationally, by developing and delivering effective and innovative skills training and published educational content. The Skills Network currently pride themselves on having an overall achievement rate of 91%.

Constantly developing new, innovative and engaging ways to deliver learning and training opportunities, they strive to maintain and improve on their market-leading status.



English and Maths Product guide

We also offer product guides in the following sectors:

- Business Administration and Management
- Catering and Hospitality
- Children and Young People
- Creative, Design and Digital
- Early Years Education
- Education, Training and Assessment
- Health and Science
- Health and Social Care
- Retail
- Sport, Public Services and Travel
- Transport, Engineering and Construction

For details on the many qualifications that will support learners' general progression, please see our Supporting Qualifications document.

Functional Skills

Entry Level 1, 2 and 3 Functional Skills Qualifications in English

Minimum Entry Age: 14

LRA

ncfe.

FACTS AND FIGURES

	ENTRY 1	ENTRY 2	ENTRY 3
Qualification no/Learning Aim Reference:	603/5059/3	603/5056/8	603/5052/0
Guided Learning Hours (GLH):	55	55	55
Total Qualification Time (TQT):	61	61	61

Learning Resources Available: NCFE

Level 1 Functional Skills Qualification in English

Minimum Entry Age: 14

LRA

ncfe.

FACTS AND FIGURES

Qualification no/Learning Aim Reference:	603/5058/1
Guided Learning Hours (GLH):	55
Total Qualification Time (TQT):	66

Learning Resources Available: NCFE

Level 2 Functional Skills Qualification in English

Minimum Entry Age: 14

LRA

ncfe.

FACTS AND FIGURES

Qualification no/Learning Aim Reference:	603/5054/4
Guided Learning Hours (GLH):	55
Total Qualification Time (TQT):	66

Learning Resources Available: NCFE

Entry Level 1, 2 and 3 Functional Skills Qualifications in Mathematics

Minimum Entry Age: 14

LRA

ncfe.

FACTS AND FIGURES

	ENTRY 1	ENTRY 2	ENTRY 3
Qualification no/Learning Aim Reference:	603/5057/X	603/5053/2	603/5061/1
Guided Learning Hours (GLH):	55	55	55
Total Qualification Time (TQT):	61	61	61

Learning Resources Available: NCFE

Level 1 Functional Skills Qualification in Mathematics

Minimum Entry Age: 14

LRA

ncfe.

FACTS AND FIGURES

Qualification no/Learning Aim Reference:	603/5055/6
Guided Learning Hours (GLH):	55
Total Qualification Time (TQT):	66

Learning Resources Available: NCFE

Level 2 Functional Skills Qualification in Mathematics

Minimum Entry Age: 14

LRA

ncfe.

FACTS AND FIGURES

Qualification no/Learning Aim Reference:	603/5060/X
Guided Learning Hours (GLH):	55
Total Qualification Time (TQT):	66

Learning Resources Available: NCFE

ncfe.

take a bite.



Bite-sized English and maths

Bite-sized units in English and maths allow you to build a flexible programme that works, helping you target the specific areas your learners might be struggling with.

Your learners will benefit from a targeted plan of learning to help boost their confidence and achievement, and you'll benefit from:

- content that's practical in nature
- the ability to mix and match from a huge range of units
- no external assessment
- high quality resources
- low administration.

Email englishandmaths@ncfe.org.uk to find out more.

ncfe.

fantastically functional.

Choose NCFE for Functional Skills and we'll guide you through the transition of the reform with our dedicated English and maths curriculum experts.

We offer Functional Skills in English and maths from entry level – level 2, all supported by a large number of interactive learning resources that are suitable for both classroom and workplace learning.

Find out more about our qualifications and how we can support you.
functionalskills@ncfe.org.uk



English and Maths

Entry Level 1, 2 and 3 Certificates in English

Minimum Entry Age: 14 **ncfe.**

FACTS AND FIGURES			
	ENTRY 1	ENTRY 2	ENTRY 3
Qualification no/Learning Aim Reference:	601/1567/1	601/1552/X	601/1551/8
Guided Learning Hours (GLH):	160	190	180
Total Qualification Time (TQT):	160	190	180
Credit Value:	16	19	18

Entry Level 1, 2 and 3 Awards in English: Reading

Minimum Entry Age: 14 **ncfe.**

FACTS AND FIGURES			
	ENTRY 1	ENTRY 2	ENTRY 3
Qualification no/Learning Aim Reference:	601/1557/9	601/1535/X	601/1515/4
Guided Learning Hours (GLH):	40	70	70
Total Qualification Time (TQT):	40	70	70
Credit Value:	4	7	7

Entry Level 1, 2 and 3 Awards in English: Speaking and Listening

Minimum Entry Age: 14 **ncfe.**

FACTS AND FIGURES			
	ENTRY 1	ENTRY 2	ENTRY 3
Qualification no/Learning Aim Reference:	601/1558/0	601/1536/1	601/1517/8
Guided Learning Hours (GLH):	70	70	60
Total Qualification Time (TQT):	70	70	60
Credit Value:	7	7	6

Entry Level 1, 2 and 3 Awards in English: Writing

Minimum Entry Age: 14

ncfe.

FACTS AND FIGURES

	ENTRY 1	ENTRY 2	ENTRY 3
Qualification no/Learning Aim Reference:	601/1566/X	601/1537/3	601/1519/1
Guided Learning Hours (GLH):	50	50	50
Total Qualification Time (TQT):	50	50	50
Credit Value:	5	5	5

QUALIFICATION TITLE	QUALIFICATION NUMBER	GLH	TQT	CREDIT VALUE
Entry Level Certificate in English (Entry 1)	601/1567/1	160	160	16
Entry Level Certificate in English (Entry 2)	601/1552/X	190	190	19
Entry Level Certificate in English (Entry 3)	601/1551/8	180	180	18
Entry Level Award in English: Reading (Entry 1)	601/1557/9	40	40	4
Entry Level Award in English: Reading (Entry 2)	601/1535/X	70	70	7
Entry Level Award in English: Reading (Entry 3)	601/1515/4	70	70	7
Entry Level Award in English: Speaking and Listening (Entry 1)	601/1558/0	70	70	7
Entry Level Award in English: Speaking and Listening (Entry 2)	601/1536/1	70	70	7
Entry Level Award in English: Speaking and Listening (Entry 3)	601/1517/8	60	60	6
Entry Level Award in English: Writing (Entry 1)	601/1566/X	50	50	5
Entry Level Award in English: Writing (Entry 2)	601/1537/3	50	50	5
Entry Level Award in English: Writing (Entry 3)	601/1519/1	50	50	5
Entry Level Award in English: Alphabetical Order (Entry 2)	601/1533/6	10	10	1
Entry Level Award in English: Alphabetical Order (Entry 3)	601/1510/5	10	10	1
Entry Level Award in English: Developing Reading Skills (Entry 1)	601/1569/5	20	20	2
Entry Level Award in English: Developing Reading Skills (Entry 2)	601/1555/5	30	30	3
Entry Level Award in English: Developing Reading Skills (Entry 3)	601/1511/7	30	30	3
Entry Level Award in English: Discussing with Others (Entry 2)	601/1534/8	20	20	2
Entry Level Award in English: Essential Spelling and Hand-writing (Entry 3)	601/1512/9	20	20	2
Entry Level Award in English: Essential Writing Skills (Entry 1)	601/1570/1	20	20	2
Entry Level Award in English: Essential Writing Skills (Entry 2)	601/1540/3	20	20	2
Entry Level Award in English: Essential Writing Skills (Entry 3)	601/1513/0	30	30	3
Entry Level Award in English: Listening and Responding (Entry 1)	601/1575/0	30	30	3
Entry Level Award in English: Listening and Responding (Entry 2)	601/1538/5	20	20	2
Entry Level Award in English: Listening and Responding (Entry 3)	601/1514/2	20	20	2
Entry Level Award in English: Listening to Information (Entry 1)	601/1556/7	10	10	1
Entry Level Award in English: Reading to Understand (Entry 2)	601/1550/6	30	30	3
Entry Level Award in English: Reading to Understand (Entry 3)	601/1516/6	30	30	3
Entry Level Award in English: Reading Words (Entry 1)	601/1576/2	20	20	2
Entry Level Award in English: Speaking to be Understood (Entry 2)	601/1539/7	30	30	3
Entry Level Award in English: Speaking with Others (Entry 1)	601/1577/4	30	30	3
Entry Level Award in English: Write and Spell Words and Phrases (Entry 2)	601/1541/5	30	30	3
Entry Level Award in English: Writing and Spelling Words (Entry 1)	601/1578/6	30	30	3

Key Certificate Qualifications Themed Awards Individual Awards

Level 1 Certificate in English

Minimum Entry Age: 14

LRA

ncfe.

FACTS AND FIGURES

Qualification no/Learning Aim Reference:	601/1530/0
Guided Learning Hours (GLH):	130
Total Qualification Time (TQT):	130
Credit Value:	13

Learning Resources Available: NCFE / Learning Curve Group

Level 1 Award in English: Listening and Responding to Others

Minimum Entry Age: 14

ncfe.

FACTS AND FIGURES

Qualification no/Learning Aim Reference:	601/1524/5
Guided Learning Hours (GLH):	20
Total Qualification Time (TQT):	20
Credit Value:	2

Level 1 Award in English: Speaking to Others

Minimum Entry Age: 14

ncfe.

FACTS AND FIGURES

Qualification no/Learning Aim Reference:	601/1528/2
Guided Learning Hours (GLH):	20
Total Qualification Time (TQT):	20
Credit Value:	2

Level 1 Award in English: Speaking and Listening

Minimum Entry Age: 14

ncfe.

FACTS AND FIGURES

Qualification no/Learning Aim Reference:	601/1520/8
Guided Learning Hours (GLH):	50
Total Qualification Time (TQT):	50
Credit Value:	5

Level 1 Award in English: Reading

Minimum Entry Age: 14 **ncfe.**

FACTS AND FIGURES

Qualification no/Learning Aim Reference:	601/1526/9
Guided Learning Hours (GLH):	40
Total Qualification Time (TQT):	40
Credit Value:	4

Level 1 Award in English: Writing

Minimum Entry Age: 14 **ncfe.**

FACTS AND FIGURES

Qualification no/Learning Aim Reference:	601/1529/4
Guided Learning Hours (GLH):	40
Total Qualification Time (TQT):	40
Credit Value:	4

QUALIFICATION TITLE	QUALIFICATION NUMBER	GLH	TQT	CREDIT VALUE
Level 1 Certificate in English	601/1530/0	130	130	13
Level 1 Award in English: Listening and Responding to Others	601/1524/5	20	20	2
Level 1 Award in English: Speaking to Others	601/1528/2	20	20	2
Level 1 Award in English: Speaking and Listening	601/1520/8	50	50	5
Level 1 Award in English: Reading	601/1526/9	40	40	4
Level 1 Award in English: Writing	601/1529/4	40	40	4
Level 1 Award in English: Composing Texts	601/1521/X	20	20	2
Level 1 Award in English: Constructing Sentences	601/1522/1	20	20	2
Level 1 Award in English: Interpreting Texts	601/1523/3	20	20	2
Level 1 Award in English: Participating in Discussions	601/1525/7	10	10	1
Level 1 Award in English: Responding to Creative Texts	601/1527/0	20	20	2

Key

 Certificate Qualifications	 Themed Awards	 Individual Awards
--	---	---



Level 2 Certificate in English

Minimum Entry Age: 14

ncfe.

FACTS AND FIGURES

Qualification no/Learning Aim Reference: 601/1568/3

Guided Learning Hours (GLH): 130

Total Qualification Time (TQT): 130

Credit Value: 13

QUALIFICATION TITLE	QUALIFICATION NUMBER	GLH	TQT	CREDIT VALUE
Level 2 Certificate in English	601/1530/0	130	130	13
Level 2 Award in English: Reading	601/1544/0	40	40	4
Level 2 Award in English: Writing	601/1549/X	40	40	4
Level 2 Award in English: Composing Texts	601/1531/2	20	20	2
Level 2 Award in English: Constructing Sentences	601/1532/4	20	20	2
Level 2 Award in English: Participating in Discussions	601/1543/9	10	10	1
Level 2 Award in English: Responding to Creative Texts	601/1545/2	20	20	2
Level 2 Award in English: Speaking to Others	601/1547/6	20	20	2
Level 2 Award in English: Understanding Texts	601/1548/8	20	20	2

Key

Certificate Qualifications
 Themed Awards
 Individual Awards

Entry Level 1, 2 and 3 Certificates in Maths

Minimum Entry Age: 14

ncfe.

FACTS AND FIGURES

	ENTRY 1	ENTRY 2	ENTRY 3
Qualification no/Learning Aim Reference:	601/0609/8	601/0610/4	601/0611/6
Guided Learning Hours (GLH):	170	210	230
Total Qualification Time (TQT):	170	210	230
Credit Value:	17	21	23

QUALIFICATION TITLE	QUALIFICATION NUMBER	GLH	TQT	CREDIT VALUE
Entry Level Certificate in Maths (Entry 1)	601/0609/8	170	170	17
Entry Level Certificate in Maths (Entry 2)	601/0610/4	210	210	21
Entry Level Certificate in Maths (Entry 3)	601/0611/6	230	230	23
Entry Level Award in Maths: Handling Data (Entry 1)	601/0906/3	50	50	5
Entry Level Award in Maths: Handling Data (Entry 2)	601/0921/X	40	40	4
Entry Level Award in Maths: Handling Data (Entry 3)	601/0923/3	20	20	2
Entry Level Award in Maths: Using Measurement, Shape and Space (Entry 1)	601/0905/1	60	60	6
Entry Level Award in Maths: Using Measurement, Shape and Space (Entry 2)	601/0893/9	100	100	10
Entry Level Award in Maths: Using Measurement, Shape and Space (Entry 3)	601/0882/4	100	100	10
Entry Level Award in Maths: Using Number (Entry 1)	601/0904/X	60	60	6
Entry Level Award in Maths: Using Number (Entry 2)	601/0892/7	70	70	7
Entry Level Award in Maths: Using Number (Entry 3)	601/0878/2	110	110	11
Entry Level Award in Maths: Calculating Length, Weight and Capacity (Entry 3)	601/0881/2	30	30	3
Entry Level Award in Maths: Calculating with Numbers - Addition and Subtraction (Entry 3)	601/0879/4	30	30	3
Entry Level Award in Maths: Calculating with Numbers - Multiplication and Division (Entry 3)	601/0883/6	30	30	3
Entry Level Award in Maths: Calculating with Numbers (Entry 2)	601/0922/1	30	30	3
Entry Level Award in Maths: Calculating with Numbers up to 10 (Entry 1)	601/0908/7	30	30	3
Entry Level Award in Maths: Calculations with Money (Entry 3)	601/0888/5	20	20	2
Entry Level Award in Maths: Collecting and Representing Information (Entry 2)	601/0903/8	20	20	2
Entry Level Award in Maths: Describing and Comparing Size and Dimension (Entry 1)	601/0911/7	20	20	2
Entry Level Award in Maths: Extract and Compare Information (Entry 3)	601/0890/3	10	10	1
Entry Level Award in Maths: Identifying 2D and 3D Shapes (Entry 1)	601/0913/0	10	10	1
Entry Level Award in Maths: Know about Coins, Notes and Measurements of Time (Entry 1)	601/0910/5	10	10	1
Entry Level Award in Maths: Know about Measuring Time (Entry 2)	601/0902/6	10	10	1
Entry Level Award in Maths: Know How to Extract Information (Entry 1)	601/0918/X	10	10	1
Entry Level Award in Maths: Know How to Represent Information (Entry 1)	601/0915/4	30	30	3
Entry Level Award in Maths: Knowing about 2D and 3D Shapes and Positional Vocabulary (Entry 2)	601/0897/6	30	30	3
Entry Level Award in Maths: Knowing about Fractions (Entry 2)	601/0901/4	10	10	1
Entry Level Award in Maths: Knowing about Temperature and Instruments of Measure (Entry 2)	601/0899/X	20	20	2
Entry Level Award in Maths: Problem Solving with Numbers up to 10 (Entry 1)	601/0909/9	20	20	2
Entry Level Award in Maths: Record and Present Information (Entry 3)	601/0891/5	10	10	1
Entry Level Award in Maths: Sorting Information (Entry 1)	601/0916/6	10	10	1
Entry Level Award in Maths: Understand How to Extract, Sort and Compare Information (Entry 2)	601/0900/2	20	20	2
Entry Level Award in Maths: Understanding Decimals (Entry 3)	601/0884/8	20	20	2
Entry Level Award in Maths: Understanding Fractions (Entry 3)	601/0880/0	10	10	1
Entry Level Award in Maths: Understanding Length, Weight and Capacity (Entry 2)	601/0895/2	30	30	3
Entry Level Award in Maths: Understanding Properties of Shapes and Positional Vocabulary (Entry 3)	601/0889/7	30	30	3
Entry Level Award in Maths: Using Money (Entry 2)	601/0896/4	10	10	1
Entry Level Award in Maths: Using Simple Positional Vocabulary (Entry 1)	601/0914/2	10	10	1
Entry Level Award in Maths: Working with Numbers (Entry 2)	601/0894/0	10	10	1
Entry Level Award in Maths: Working with Numbers up to 10 (Entry 1)	601/0907/5	10	10	1
Entry Level Award in Maths: Working with Numbers up to 1000 (Entry 3)	601/0886/1	10	10	1

Key Certificate Qualifications Themed Awards Individual Awards



Level 1 Certificate in Maths

Minimum Entry Age: 14

LRA

ncfe.

FACTS AND FIGURES

Qualification no/Learning Aim Reference:	601/1090/9
Guided Learning Hours (GLH):	170
Total Qualification Time (TQT):	170
Credit Value:	17

Learning Resources Available from: NCFE / Learning Curve Group

Level 1 Award in Maths: Handling Data

Minimum Entry Age: 14

ncfe.

FACTS AND FIGURES

Qualification no/Learning Aim Reference:	601/1163/X
Guided Learning Hours (GLH):	40
Total Qualification Time (TQT):	40
Credit Value:	4

Level 1 Award in Maths: Using Measurement, Shape and Space

Minimum Entry Age: 14

ncfe.

FACTS AND FIGURES

Qualification no/Learning Aim Reference:	601/1162/8
Guided Learning Hours (GLH):	40
Total Qualification Time (TQT):	40
Credit Value:	4

Level 1 Award in Maths: Using Number

Minimum Entry Age: 14

ncfe.

FACTS AND FIGURES

Qualification no/Learning Aim Reference:	601/1161/6
Guided Learning Hours (GLH):	70
Total Qualification Time (TQT):	70
Credit Value:	7

QUALIFICATION TITLE	QUALIFICATION NUMBER	GLH	TQT	CREDIT VALUE
Level 1 Certificate in Maths	601/1090/9	170	170	17
Level 1 Award in Maths: Handling Data	601/1163/X	40	40	4
Level 1 Award in Maths: Using Measurement, Shape and Space	601/1162/8	40	40	4
Level 1 Award in Maths: Using Number	601/1161/6	70	70	7
Level 1 Award in Maths: Working with 2D Shapes and Space	601/1168/9	10	10	1
Level 1 Award in Maths: Working with Basic Algebra and Geometry	601/1177/X	20	20	2
Level 1 Award in Maths: Working with Decimals and Percentages	601/1166/5	20	20	2
Level 1 Award in Maths: Working with Fractions	601/1165/3	20	20	2
Level 1 Award in Maths: Working with Mathematical Skills	601/1178/1	20	20	2
Level 1 Award in Maths: Working with Measurement	601/1167/7	20	20	2
Level 1 Award in Maths: Working with Money	601/1169/0	10	10	1
Level 1 Award in Maths: Working with Probability	601/1175/6	20	20	2
Level 1 Award in Maths: Working with Statistics	601/1170/7	20	20	2
Level 1 Award in Maths: Working with Whole Numbers	601/1164/1	30	30	3

Key

	Certificate Qualifications		Themed Awards		Individual Awards
---	----------------------------	---	---------------	---	-------------------



Level 2 Certificate in Maths

Minimum Entry Age: 14

ncfe.

FACTS AND FIGURES

Qualification no/Learning Aim Reference:	601/1091/0
Guided Learning Hours (GLH):	170
Total Qualification Time (TQT):	170
Credit Value:	17

Level 2 Award in Maths: Using Measurement, Shape and Space

Minimum Entry Age: 14

ncfe.

FACTS AND FIGURES

Qualification no/Learning Aim Reference:	601/1179/3
Guided Learning Hours (GLH):	40
Total Qualification Time (TQT):	40
Credit Value:	4

Level 2 Award in Maths: Using Number

Minimum Entry Age: 14

ncfe.

FACTS AND FIGURES

Qualification no/Learning Aim Reference:	601/1180/X
Guided Learning Hours (GLH):	70
Total Qualification Time (TQT):	70
Credit Value:	7

QUALIFICATION TITLE	QUALIFICATION NUMBER	GLH	TQT	CREDIT VALUE
Level 2 Certificate in Maths	601/1091/0	170	170	17
Level 2 Award in Maths: Using Measurement, Shape and Space	601/1179/3	40	40	4
Level 2 Award in Maths: Using Number	601/1180/X	70	70	7
Level 2 Award in Maths: Working with 2D and 3D Shapes and Space	601/1200/1	10	10	1
Level 2 Award in Maths: Working with Algebra	601/1203/7	20	20	2
Level 2 Award in Maths: Working with Decimals and Percentages	601/1192/6	20	20	2
Level 2 Award in Maths: Working with Fractions	601/1183/5	20	20	2
Level 2 Award in Maths: Working with Measurement	601/1193/8	30	30	3
Level 2 Award in Maths: Working with Probability	601/1202/5	20	20	2
Level 2 Award in Maths: Working with Statistics	601/1201/3	20	20	2
Level 2 Award in Maths: Working with Whole Numbers	601/1182/3	30	30	3

Key

Certificate Qualifications
 Themed Awards
 Individual Awards



Level 3 Certificate in Mathematics for Everyday Life

Minimum Entry Age: 16

FACTS AND FIGURES

Qualification no/Learning Aim Reference:	603/3437/X
Guided Learning Hours (GLH):	180
Total Qualification Time (TQT):	270




eLearning assessment solutions for English and maths

Skills Builder from Skills Forward is the perfect eLearning platform for organisations that are teaching English and maths to learners of all ages and levels. It supports both Functional Skills and GCSEs with a host of skills diagnostics, video tutorials, progression tracking, innovative resources and more!

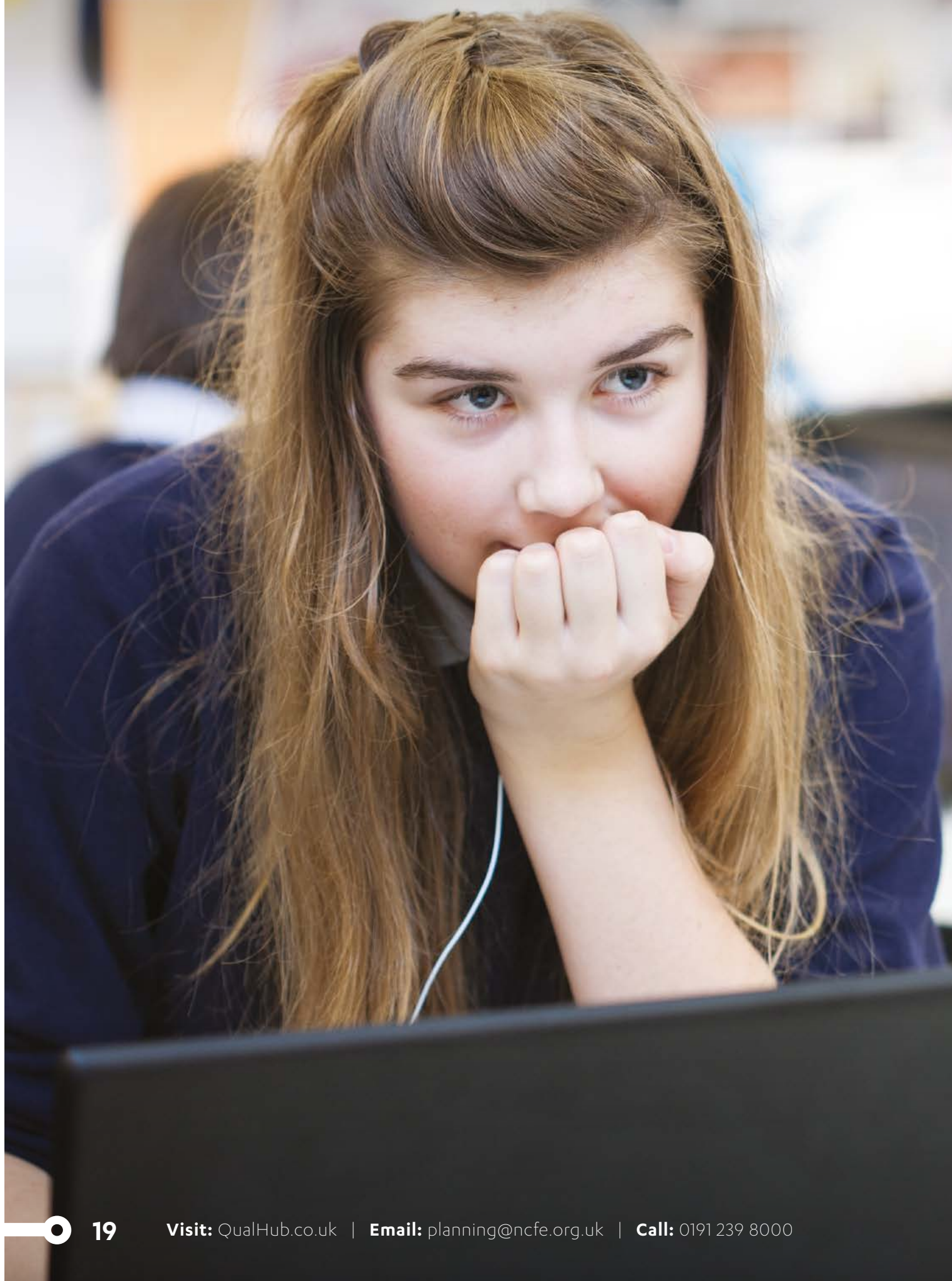
Get in touch to find out how Skills Forward can work for you.

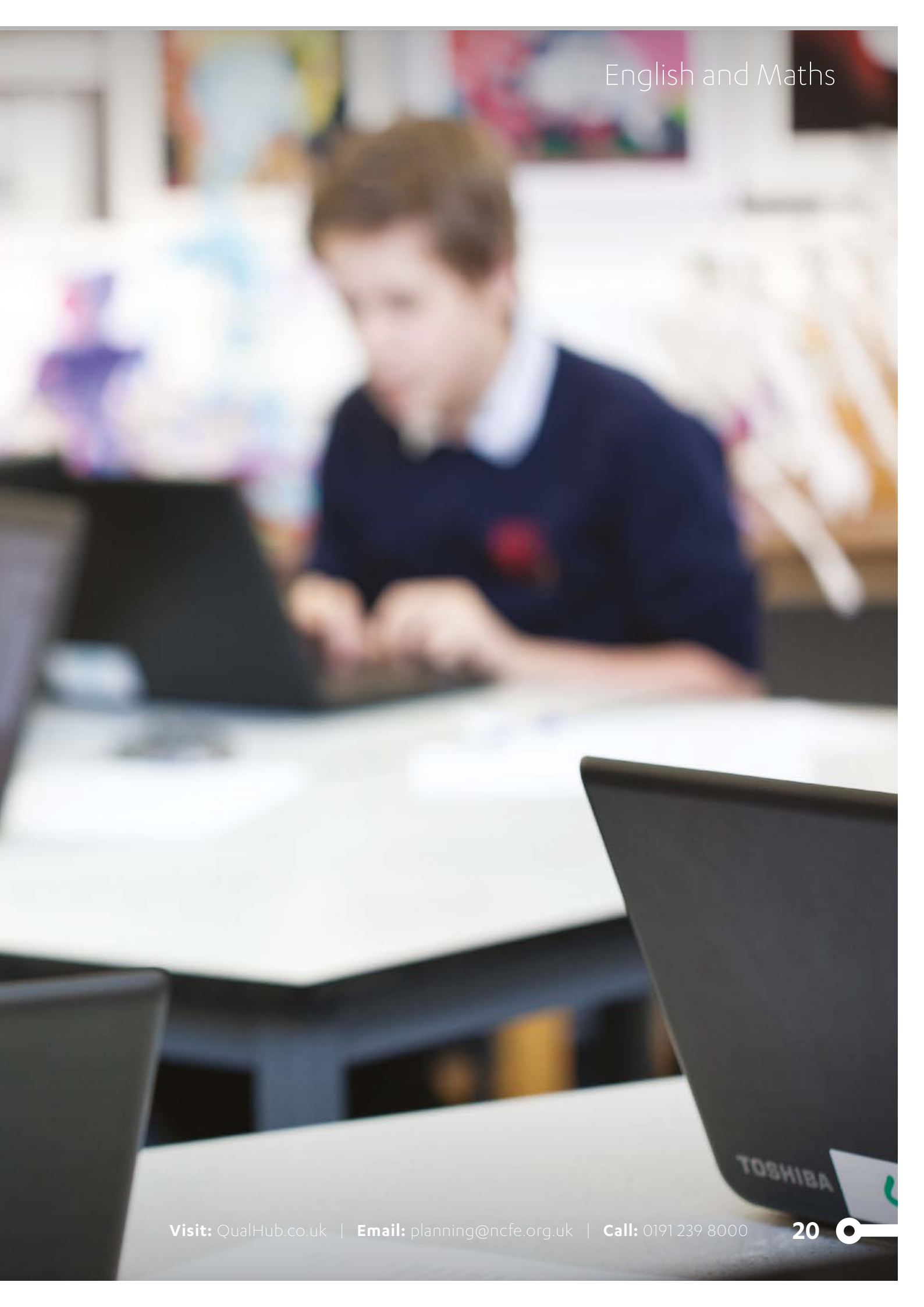
 info@skillsforward.co.uk

 0300 101 1023

 [skillsforward.co.uk](https://www.skillsforward.co.uk)







NCFE

Q6
Quorum Business Park
Benton Lane
Newcastle upon Tyne
NE12 8BT

Call: 0191 239 8000*
Email: planning@ncfe.org.uk
Visit: ncfe.org.uk
 **@NCFE**

*To continue our levels of customer service, telephone calls may be recorded.